

# HUTCHIES' TRUTH

A QUARTERLY NEWSLETTER FOR HUTCHINSON BUILDERS

MAY 2016

## Statim-Yaga program an instant boost to Indigenous employment

CHAIRMAN Scott Hutchinson said Hutchies' new Indigenous program, Statim-Yaga (start work), had produced excellent results in six months.

Thirty Indigenous men and women, including 16 apprentices, have been employed by Hutchies, its subcontractors and its suppliers since November when Statim-Yaga began.

Statim-Yaga is derived from Torres Strait Islander Creole and the Jagera language group, respectively.

Statim translates "to start or begin" and Yaga translates "to work".

The new Statim-Yaga team members will be mentored through all stages of their employment.

They are supported by Hutchies' apprentice development co-ordinator, Peter Forsingdal, the Indigenous program co-ordinator, Mark Kucks, and the newly appointed Indigenous mentor co-ordinator, Joel Anderson, whose role is to provide culturally appropriate mentoring for Indigenous team members with Hutchies and its subbies and suppliers.



From left, Steven Tatipata, Peter Forsingdal (apprentice development co-ordinator), Joe Smith, Kieran Buttwell and Joel Anderson (Indigenous mentor co-ordinator).

THREE new carpentry apprentices of Aboriginal and Torres Strait Islander backgrounds have been inducted by Hutchies.

They are Steven Tatipata, Joe Smith and Kieran Buttwell.

Steven is a member of Brisbane Broncos NYC squad and will start his apprenticeship with Russell Fryer (COTY 2010) and Michael White on the new Broncos training and administration facility in Brisbane.

Joe and Kieran are both products of Hutchies' Gold Coast School of Construction training program and have been taken on by John Berlese's (COTY 2006) team.

Scott said Hutchies had responded to an invitation from the Federal Government to some of Australia's largest corporations to join in an initiative known as the Employment Parity Initiative (EPI).

Under the EPI, the Department of the Prime Minister and Cabinet has set a target of 20,000 more Indigenous Australians in private sector jobs by 2020.

Scott said Hutchies' target was to train and place 350 Indigenous

jobseekers into construction-related employment over the next three years.

"Statim-Yaga has been given a high priority at Hutchies and managing director, Greg Quinn (COTY 2007), has been liaising with the Federal Minister for Indigenous Affairs, Senator Nigel Scullion, to get our project up and running," said Scott.

"Greg is also seeking the goodwill of our large subcontractor and supplier base

to join us in the initiative."

Scott said large Hutchies' projects around Australia – particularly those in and near Indigenous populations – would provide employment opportunities.

He said that, if Statim-Yaga could achieve its EPI goals by 2020, Indigenous team members would make up more than four percent of Hutchies' workforce.

➤ **More Statim-Yaga on P. 3**



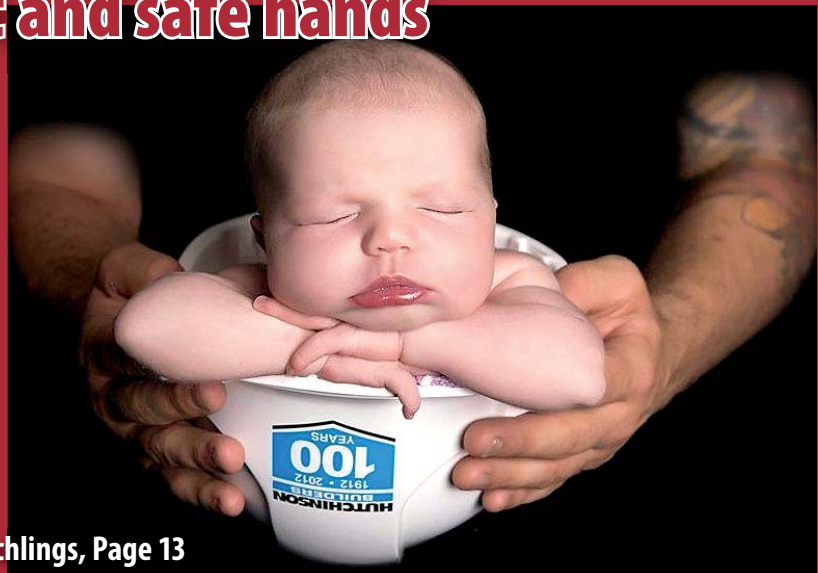
First year painting and decorating apprentice, Shanice Gee, graduated from Hutchies' pre-apprenticeship training program at the Gold Coast School of Construction and was employed by Usher and Son painting contractors. Shanice is pictured with her first tool kit which Hutchies helped to purchase.

## Safety hat and safe hands

BRYCE Ward, Hutchies' site manager on the Hercules Apartments project in Brisbane, and new born daughter, Briahna, capture the essence of a good life – safe workplace and a happy home.

Bryce and wife, Rebecca, had a celebration on March 10 for the arrival of Briahna Cameron Ward, a new sister for Bella.

➤ **More Hutchies' hatchlings, Page 13**





*The new student accommodation complex has 120 modular, self-contained studio apartments.*

## Timber stacks up well for Tassie uni students

STUDENTS in residence at the University of Tasmania are enjoying life in the new \$15 million accommodation complex built by Hutchies at Inveresk on the banks of the Esk River in Launceston.

The University of Tasmania required accommodation for the start of the 2016 academic year, so time was of utmost importance.

Given the challenging design, time pressure and local weather conditions, it was a credit to the team that they completed the works to a high standard, on time and within budget.

The design aimed to showcase timber wherever possible and included timber structure for the modules, truss roof, floors, stairs, walkways and approximately 32 kilometres of locally milled macrocarpa timber battens for screens.

The project involved the construction of 120 modular, self-contained studio apartments, each with its own kitchen, bathroom and study space, as well as common study areas, kitchen, washing facilities, vehicle and bike parking.

The design is a mix of modular and conventional construction methods.

The modular component required the establishment of a temporary modular yard in Launceston for a six month period – the first of its kind in Tasmania.

The modular yard utilised the skills, knowledge and personnel (Joe Newrick and Jay Kruger) from the Yatala yard, as well as the existing Launceston carpentry team and some new blood.

Although it was short lived (April to October), the yard kept the team out of the rain and snow in a typical Launceston winter and helped production meet the tight timeline and maintain quality control.

The project also included a modular roof design which involved construction of the roof frame and cladding in 20 separate sections on an adjacent block of land.

ABOUT 60 percent of Hutchies' \$2.5 billion forward order book, which will convert to approximately \$1.8 billion in the 2016-17 year, is in the residential, student accommodation and hotel markets.

A further 16 percent is in government and public works, 12 percent is in retail and 12 percent sits in the traditional commercial and industrial sectors.

As we see it, "if you aren't in the residential sector at the moment, you won't be doing much at all".

Fortunately, Hutchies is geared to handle 3,500 apartments per annum.

We have the people, we have "quality" in hand and we have the financial capacity.

When you construct around 240 projects every year – many of them residential buildings – you build up considerable experience, particularly in areas of project financing, design, cost structure, program and quality.

At Hutchies, we are able to utilise this experience across our large client and subbie base to ensure the best possible outcomes for all concerned.

The most asked question I get is, "where to from here for Hutchies?"

I think we are probably the largest builder in the country and our balance sheet strength is right up there.

We are not really concerned how big or small we are. We just want to be the best we can be and be considered, by those who count, to be a good, decent and fair builder.

Like everyone else, we are uncertain where the economy is likely to take us in the future, so for now, our plan is to service the residential market and we can handle anything from a few townhouses in the suburbs to a \$400 million tower in the CBDs of Brisbane, Sydney or Melbourne.

I don't think anyone really knows where the economy will take us in the future, so we will simply keep our antennae up and move quickly to new and emerging markets as and when they present themselves.

### From the Managing Director



Concurrently, we will continue to expand our geographical footprint into new regions like Canberra, Perth and regional Victoria.

Our sole aim is to ensure we provide job security for our 1,300 people – regardless of what the economy does.

Industrial relations remains an interesting dynamic with the reinstatement of the ABCC receiving plenty of focus; the Building Code 2013 (which is the Federal Government's procurement guidelines for the building and construction industry when performing federally funded projects) being rigorously enforced by Fair Work Building & Construction; the results of the Royal Commission yet to unfold; and the country's powerful construction union, the CFMEU, continuing to make its presence felt.

Hutchies has always adopted a highly proactive approach to workplace relations at every level.

Compliance with workplace relations legislation, the Building Code 2013, and Hutchinson's EBA are all paramount to Hutchinson's success.

Hutchies' diverse business requires a highly flexible workplace relations strategy.

It is for this reason, we have always encouraged open, honest, fair and friendly relationships with all stakeholders in the workplace and this extends to employees, subcontractors and their workforces, clients, government and its agencies and unions.

– Greg Quinn



*The University of Tasmania's new student accommodation complex in Launceston.*

The sections were then lifted into position which saved time and cost and reduced the need for working at height.

The project is the first in Tasmania to use Cross Laminated Timber (CLT) which was imported from New Zealand.

The four-storey building is predominantly timber framed which raised fire rating challenges.

The design team was led by Morrison and Breytenbach Architects and included early involvement from Robert Morris Nunn Architects and the University of Tasmania's Centre for Sustainable Architecture with Wood (CSAW), and with Aldanmark, Engineering Solutions Tasmania, Exsto Management and Red Fire in the sub-consultant team.



*The project's design aimed to showcase timber wherever possible.*

# Experience delivers quality for luxury Illumina buyers

HUTCHIES has broken ground on the \$120 million Illumina apartment tower at Toowong for Brisbane-based developer, Property Solutions, on the back of bullish pre-sales of more than \$100 million.

Launched to the market in mid 2015, the 221-apartment development found instant favour with owner-occupier buyers.

Illumina's construction is scheduled for completion by the end of 2017, with the first residents due to move in shortly after.

Property Solutions sales and marketing manager, Craig Wright, said Hutchies was selected for its extensive experience with construction projects of this calibre in Brisbane.

"Having a builder of such repute gives us confidence the project will meet the high standards of quality and craftsmanship expected in luxury residences," he said.

"Illumina's collection of \$1 million-plus apartments has proven particularly popular with



*Scott Hutchinson and Property Solutions' Craig Wright with a model of the Toowong Illumina Project.*

owner occupier buyers.

"These apartments predominantly consist of three-bedrooms and a study, located on the tower's top three levels," he said.

Illumina will offer one, two and three-bedroom apartments across 21 levels on the corner of Lissner and Jephson Streets in the heart of Toowong.

Apartments on level five and above will have sweeping city and river and mountain views.

Residents will have access to a recreational sky deck with an infinity-edge pool, entertaining space, open-air cinema and spectacular views from the CBD to Mount Coot-tha.

The current apartment release at Illumina is priced from \$351,000 to \$1.1 million.

Scott Hutchinson said Hutchies was pleased to be delivering such a highly anticipated project to the Toowong skyline.

"It is exciting and encouraging to be involved in a development that has received so much attention and commitment from the market," he said.

"Property Solutions, which has been established in Brisbane for two decades, is a market leader in urban renewal projects across Southeast Queensland and has a workbook of more than 150 completed projects."

For more details about Illumina visit [www.toowongliving.com.au](http://www.toowongliving.com.au)



*Indigenous artist, Hal Oram, with 'Connectivity', created for Hutchies.*

## Artwork connects old and new

THE Indigenous program, Statim-Yaga, recently engaged the Gumurri Unit at Griffith University and its Contemporary Australian Indigenous Art program to commission an original artwork for Hutchies.

Griffith's Indigenous art students were invited to create an iconic Indigenous artwork that linked Hutchies' Indigenous program, the history of the organisation and the heritage of the First Australians.

All artwork was displayed in the boardroom at Toowong with staff voting for their favourite piece.

The successful entry, 'Connectivity', was created by Hal Oram, a talented Aboriginal artist who creates stories, characters, charm and mystique through his work.

Hal was raised in Mount Morgan, Queensland, near where his ancestors lived and is currently studying a Bachelor of Contemporary Australian Indigenous Art at Griffith University.

## Carpentry apprenticeship for Jake continues the tradition

CAIRNS' latest team member, Jake Anderson, comes from a family that keeps producing great stock for Hutchies.

Jake, who is a cousin to brothers, Brandon Tatipata, of Cairns, and Steven Tatipata, of Brisbane, has signed on as a carpentry apprentice.

From left, Cairns team leader, Paul De Jong (COTY 1995), is shown with Indigenous program co-ordinator, Mark Kucks, and new first year apprentice, Jake Anderson.



INTERNATIONAL organisation, Global Switch, is expanding its data storage unit, Sydney East Data Centre, on the edge of Sydney's CBD.

Hutchies' Sydney team was recently awarded the design and construction contract by Global Switch to build stages two and three of the Sydney East Data Centre which will consist of a six-storey, tier three data centre, adding 19,000 square metres of floor space.

Hutchies' Global Switch team will deliver this project which will help position Global Switch at the forefront of the international data collection sector – capable of meeting its clients needs for the next 20 years.

The project will be undertaken in two separate portions.

Portion one will have a 69-week duration and portion two will be undertaken over an 88-week period, with the entire close out date scheduled for October 2017.

On completion, the three combined stages, totalling 31,000 square metres, will act as a stand-alone facility with Hutchies having



Global Switch's expanded Sydney East Data Centre has been designed to meet its customers' requirements for the next 20 years.

## Expansion puts Global Switch at front of international data collection sector

delivered a purpose-built and environmentally sustainable data centre paralleling current world standards.

Established in 1998, Global Switch operates 10 data centres in key connectivity hubs across Europe and Asia-Pacific, providing

300,000 square metres of state-of-the-art technical space.

It has an international customer base from government organisations, financial institutions and enterprises to telecommunications carriers, managed service providers and other leading businesses.

World businesses, relying on digital information, have realised that outsourcing their data centre requirements to a specialised provider is the most efficient way of maintaining secure, reliable, resilient and cost-effective IT solutions.



## Hospice gifted \$10,000 from this grateful son

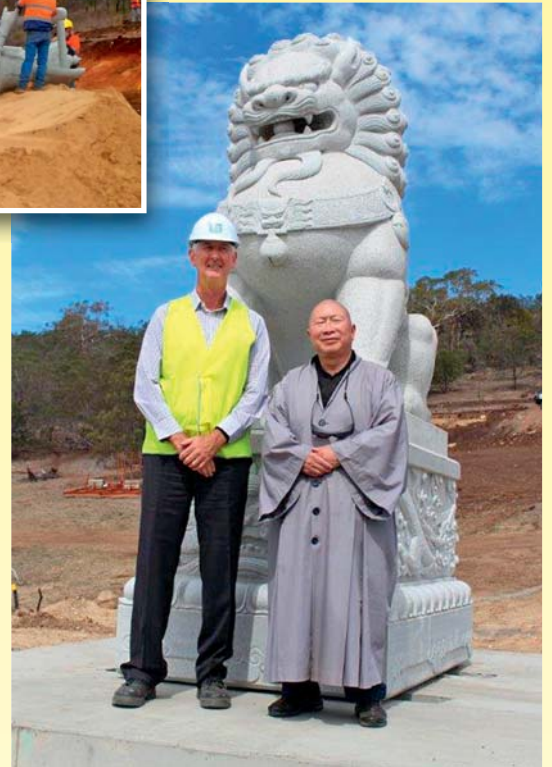
RODNEY Morgan from Hutchies' Toowoomba office fundraised recently for the Toowoomba Hospice and reached a total of \$10,000.

Subcontractors made a major contribution which was matched by Hutchies.

Rodney, a plastering foreman, said he wanted to create a legacy for his mother who spent her final days at the hospice which is a volunteer organisation.

"I want to ensure someone else's last weeks, days and minutes are spent like my Mum's were – comfortable and at peace," said Rodney.

Shown at the cheque hand-over ceremony are (from left) Mark Munro, Toowoomba Hospice promotions and fundraising manager, Hutchies' Rob Weymouth (COTY 1993) and Rodney Morgan.



From left, Hutchies' site manager, Gordon Manson, with Jarrod Banks, Brett Hext, Nick Langford and Brad Elliott. INSET PHOTO: The erection process in operation.

Hutchies' project manager, Steve Ninnes, with Master Wang.

LONG-TERM plans for a Chinese Buddhist Cultural Park near Hobart came one step closer recently when Hutchies erected six large statues imported from China.

The first stage of the project for the client, Holy Tantra Esoteric Buddhism Incorporated and the Tasmanian Chinese Buddhist Academy of Australia, involved erection of four Deva statues and two lion statues carved in China from alabaster stone.

The plan is for the 106.5 ha site to become a Chinese Buddhist Cultural Park over many years and numerous stages.

Hutchies' team leader, Mick Connolly, said the Deva statues were seven metres tall, mounted on a three-piece plinth, with a total weight of 30 tonnes each. Each lion and plinth is five metres tall, weighing 10 tonne.

## Devas and lions herald a new Chinese Buddhist Cultural Park

Mick said the first step was to design the concrete bases to support each statue, followed by excavation and a concrete pour.

"All these steps are fairly straight forward for a construction company, but then came the process of lifting into place the statues which have delicate, detailed carvings," said Mick.

"The statues were shipped flat in specially built steel-framed crates so the challenge was to sling the statues and place them vertically without causing any damage.

"With forward planning, ingenuity and nervous sweat, site manager, Gordon Manson, and his team hoisted the statues successfully, much to the delight and gratitude of the Holy Tantra Esoteric Buddhism community."

Mick said the project would have a significant tourism impact on Hobart and be of great cultural value to Tasmania.

"Hutchies now has formed a fulfilling partnership with the Holy Tantra and we look forward to continuing to build further stages of the Cultural Park," said Mick.



Hutchies' Peter Jedrisko (left) on Coles' Recognition Board at Benowa Village.

## Recognition for Peter at Coles

HUTCHIES' team member, Peter Jedrisko, has become an honorary member of the Coles' staff at the new shopping centre built by Hutchies at Benowa on the Gold Coast.

Although he doesn't work for Coles, Peter had his photograph mounted on Coles' Recognition Board in the team members' room at the newly opened Benowa Village in March.

Development manager of Coles Group Property Developments, Tom O'Sullivan, said it must be reassuring for Hutchies to know that one of its boys had taken pole position on Coles' Recognition Wall.

"Generally, I don't like to single out a person, as there was a large team who worked well, got stuck in and met all kinds of challenges," said Mr O'Sullivan.

"But Peter is a great asset to Hutchinsons and the store fit-out would not have been the success it was without him."

# Cooroy – cool to be cool

COOROY Library – built by Hutchies in the small town of Cooroy in the hinterland of Queensland’s Sunshine Coast – has been acknowledged as one of the six coolest libraries in the world – along with Stuttgart City Library, Germany; University of Aberdeen Library, Scotland; Warsaw University Library, Poland; Bishan Public Library, Singapore; and the Library of the Vienna University of Economics, Austria.

The listing was compiled by TheUrbanDeveloper.com which is the leading online source of news and information for the property and urban development industry in Australia.

Designed by Brewster Hjorth



*The cool Cooroy Library, built by Hutchies.*

Architects, the library is a part of the Mill Place cultural precinct in Cooroy, linking the existing art gallery, main city street, recreational park and the upgraded rural industry areas.

The library includes a technology centre, with digital

training rooms, community rooms, community lounge, reading areas and café.

TheUrbanDeveloper.com said the rise of the internet and digital books had caused many to forecast the downfall of the traditional library, but, instead,

libraries were having a renaissance.

According to TheUrbanDeveloper.com, libraries around the world are heading into the future, creating for their patrons a more dynamic, multi-level environment for learning and pleasure.

# Green Ladder steps up nature in Brisbane city

HUTCHIES’ team members worked with University of Queensland architectural students and three Vietnamese workers to construct Fugitive Structures 2016 at the State Library of Queensland.

Fugitive Structures is an annual architectural and cultural event for emerging and mid-career architects, conducted by the Sherman Contemporary Art Foundation (SCAF) in Sydney, and this year supported by Arts Queensland and Hutchies.

Each year, selected architects are invited to design an imaginative and functional small-scale temporary pavilion for SCAF.

This year, an innovative bamboo structure, incorporating a dense forest of natural materials, was designed by cutting-edge architect Vo Trong Nghia Architects from Vietnam.

The presentation – Green Ladder – is the architect’s first Australian exhibition.

Bamboo used in Green Ladder was traditionally treated for two months in natural waterways, followed by a further month’s treatment with fire smoke.

Vo said he wanted to bring nature back to the city.



*The Sherman Contemporary Art Foundation’s Fugitive Structures 2016 ‘Green Ladder’ installation outside the State Library of Queensland.*

“In Ho Chi Minh City, the population has reached nearly 10 million with only 0.25 percent of the entire city given over to green space,” said Vo.

“This is the problem architects

need to solve.”

In March, Green Ladder was installed on a grassy platform outside the State Library of Queensland in Brisbane, as part of the inaugural Asia

Pacific Architecture Forum (APAF), before relocation to SCAF’s courtyard in Paddington, Sydney, in June.

In 2012, Vo was named Architect of the Year in Vietnam.



*Casuarina Village Shopping Centre opened in February – four weeks ahead of schedule.*



*Coles and Hutchies recently celebrated the hand-over of Casuarina Village Shopping Centre from builder to client. Hutchies also handed over the gift of a Ripcurl surfboard – signed by world champion surfer, Mick Fanning – which now hangs on display in the store.*

HUTCHIES handed over the new \$11.5 million Casuarina Village Shopping Centre in late February – four weeks ahead of schedule.

The new retail centre, owned by CVS Lane Capital Partners, consists of a Coles supermarket and 14 speciality shops servicing the fast growing population in the beachside area.

## Early opening for Casuarina Village

After more than 10 years of planning, the project finally got the green light in April 2015, following a three-month design development period with Consolidated Property Group.

When Coles approached Hutchies for

an early launch date, significant program reviews were needed.

However, Coles and Hutchies worked together during the fit-out to ensure the earlier date could be met.



*Hutchies' site foreman, Max Claxton, is shown briefing students during their visit to the Brisbane Skytower site.*

## Students reach for the sky

STUDENTS from Queensland University of Technology recently participated in a site tour of Hutchies' Brisbane Skytower project in Margaret Street in the city.

Brisbane Skytower is a 270-metre, 90-storey residential tower which, on completion, will be the city's tallest building.

The students expressed their thanks to the construction team for facilitating their visit on a busy day, on a busy site.

Construction of the \$365 million project started in February with completion scheduled for March 2019.

Brisbane Skytower will feature 1,135 one, two and three-bedroom apartments, sub-penthouse, penthouse apartments, a recreational deck on the 89th floor and what will be Australia's highest infinity-edge swimming pool.



ALLOW me to introduce the one person, who, in my book, was responsible for the quality of the construction at Woolworths Vincentia Market Place.

Ross Durey, is senior site manager for Hutchinson Builders who was contracted by Woolworths to deliver the state of the art development.

Of course Mr Durey had a team of professionals behind him and the services of subcontractors brought in, but any over runs, failure to complete, accidents, faults, delays and any other failures, finished up on his shoulders as the site man in charge.

Having said that, he, therefore, must be the person for the accolades for a job well done.

I take my hat off to you Ross Durey and congratulate you for your outstanding perseverance under atrocious weather conditions, professionalism and tenacity to bring this project in, slightly before target, I believe.

You have our thumbs up!

Well done, Ross.

**Dennis and Kate Williams  
Sanctuary Point Concerned Citizens  
Newsletter.**

...

IT'S rare to experience good customer service anywhere, but when it's a great experience that is also genuine and sincere, then it needs to be acknowledged, recognised and rewarded.

I have recently purchased a property in Linc, so have had the pleasure of dealing with Lachy over the last few months, and the difference he has made is truly outstanding.

Having Lachy here has been a godsend!!

Quite simply he knows what needs to happen and gets things done!

Lachy is professional, helpful, enthusiastic, courteous, and talented. His work ethic is exceptional, customer experience is first-rate and he genuinely represents the values of honesty, integrity, compassion and commitment in everything he does.

He has gone above and beyond many times and never complains or is negative about anything.

You are very fortunate to have Lachy in your team, he is an asset to Hutchinsons and deserves the recognition.

**Emma Durham**

...

WELL the last 18 months went very quickly, building The Carlson.

It was a great experience working with Hutchinsons and I enjoyed the total process.

I wish to thank you all for your assistance during the design development, banking and construction phases.

As you will recall, each phase presented interesting challenges, especially dealing with Westpac in those final moments.

So a big thank you for believing in me and lending the additional monies to allow the project to proceed.

The market was keenly watching the new boys from Brisbane compete in the Melbourne CBD market and it was great that you proved the sceptics wrong with your incredible programming skills and willingness to be major players in this city.

## FEEDBACK



Settlements were very strong with 146/150 completed within 4 weeks of P.C. - no mean feat considering the pressure I was placing on the team so I could achieve settlements prior to Christmas.

So naturally the last three to four weeks put a strain on everyone.

But it was one young man that stole the show ... young Ben is a gentleman, a good listener and a solid performer.

He has built up a great reputation in Melbourne in a very short period and I thank you all for this unforgettable experience.

I wish you all well for an enjoyable 2016.

Regards

**Richard Healey**

...

I JUST wanted to pass on some feedback following my recent trip to Queensland and a review of the projects that Hutchies are completing for Frasers Property Australia.

I was very excited by the speed at which the project team, being led by your Sarah Hansen, at our Cova project is moving.

We would love for the Hutchies' team to share the time-lapse on this project as I think between our two teams there will be some lessons we both can learn when moving onto our next projects.

I mentioned to Sarah and Chris Buckland that we also have some off site manufacture technology that we would love to share from our interstate projects that may have benefits for our future endeavours together within this construction space.

I was also really fortunate to get across to the Yungaba House Project and meet Chris Chainey and Chris Taylor, to both their credit the project is looking fantastic.

Not only is the work being completed of a high standard but also the site was well presented, that it felt good from the moment we walked in the gate.

The QA processes in place as well as the volume of Hutchies' own staff carrying out construction works on the project is exemplary.

Last but not least, by any means.

I was also fortunate to see the completed Linc and Affinity projects at Yungaba that Searle's team handed over late last year.

The feedback in regards to the way his team have completed repair work and carried through with the after sales service is refreshing. From my perspective, the after sales care is just as, if not as important, as the way a project is completed.

Unfortunately, on a national basis I have only a few contractors who share this same view, so thank you.

**Nichole Sparkes  
National Construction Director  
Frasers Property Australia**

...

GREAT work and fantastic feedback so far from both customers and management at Coles Benowa Village.

So well done to the team.

There is still a bit of work to complete with bits and pieces but don't let this detract from the success this project has been.

I know you met the challenge of being five and a half weeks ahead of contractual PC, but you are actually seven weeks ahead on the Coles delivery program, so that in itself is an enormous achievement.

Great team result.

Congratulations to all.

**Tom O'Sullivan  
Development Manager  
Coles Group Property Developments**

...

VB Form Pty Ltd would like to extend their sincere gratitude to Hutchinson Builders for their clear communication, excellent project management and timely payment upon completion of our contract.

Terry the site manager was excellent to deal with throughout the project and our staff onsite were very happy with the way the work was organised.

Ben Plunkett, Chelsea Wood, Kerri Hollingsworth were also excellent to deal with.

They were able to answer any questions we had at any time.

Unfortunately in the current marketplace it is rare to work with a builder who treats their subcontractors properly or pays within a reasonable time frame.

We look forward to hopefully working with Hutchinson Builders in the future.

Kind regards,

**Vince Bramanti  
Director, VB Form**

...

I AM pleased to support Hutchinson Builders' nomination of the Milton Station Platform 1 upgrade works for the 2016 AIB Professional Excellence in Building Awards.

As the then-Superintendent for the contract, I can attest to the excellence of Hutchinson Builders' overall approach to the design and execution of the platform upgrade works at Milton Railway Station.

Working in an operating rail environment is subject to very specific constraints that require sometimes unique and innovative solutions, both from a design and construction viewpoint.

As the contractor under a relatively new (for Queensland Rail) process of early contractor involvement, Hutchinson was responsible for the design and construction of the works and the solutions they derived were economical, efficient and appropriate for the environment.

The works had very definite time constraints in order to minimise the station closure duration and its impact on rail customers.

In addition, site access was extremely limited in extent and configuration and the contractor developed effective

solutions from the very limited options available.

Within these constraints, Hutchinson Builders delivered the works on time and with no unplanned impacts on train or station operations.

The high quality of the works was a credit to Hutchinson's professionalism, dedication and commitment and they were delivered in the spirit of collaboration that was the basis for the selected contract delivery approach.

It must also be stated that the contractor's safety performance was excellent.

Safety is Queensland Rail's number one priority and Hutchinson delivered the works without incident and with superior attention to the safety requirements of the contract (both rail safety and work place health and safety).

I have no hesitation in endorsing and supporting the nomination by Hutchinson Builders for these awards.

**Adrian Pollock  
Quality and Assurance Manager  
Queensland Rail**

...

WE are really delighted with our new Box Office, and given all the final tweaks were completed last week, I thought it timely to say thank you.

It looks stunning, works well in the space and your team really worked so hard to get it done as quickly and efficiently as possible.

In contrast to the dark crowded box office that was there before, its transformed.

Would be great to show you around and grab a coffee to talk more.

I know Hutchinson Builders has had a long relationship with Brisbane Powerhouse, so would be great to get some of the history and bring you up to speed on our early thoughts around precinct Masterplanning.

**Fiona Maxwell  
Chief Executive Officer  
Brisbane Powerhouse**

...

I AM pleased to write this professional letter of support for Hutchinson Builders.

I have been a principal of three Catholic secondary schools for over a period of more than 20 years. I have been involved in the building and refurbishment of each of these schools, in one case from a greenfield site to completion of a school of 1000 secondary students.

Hutchinson Builders were the successful tenders in the most recent project at St Joseph's College, Banora Point.

I have found them to be professional, accommodating of the client's requests and very collaborative in areas where we needed to work together.

I would rate their performance in this last contract as one of the best that I have encountered over the last 20 years.

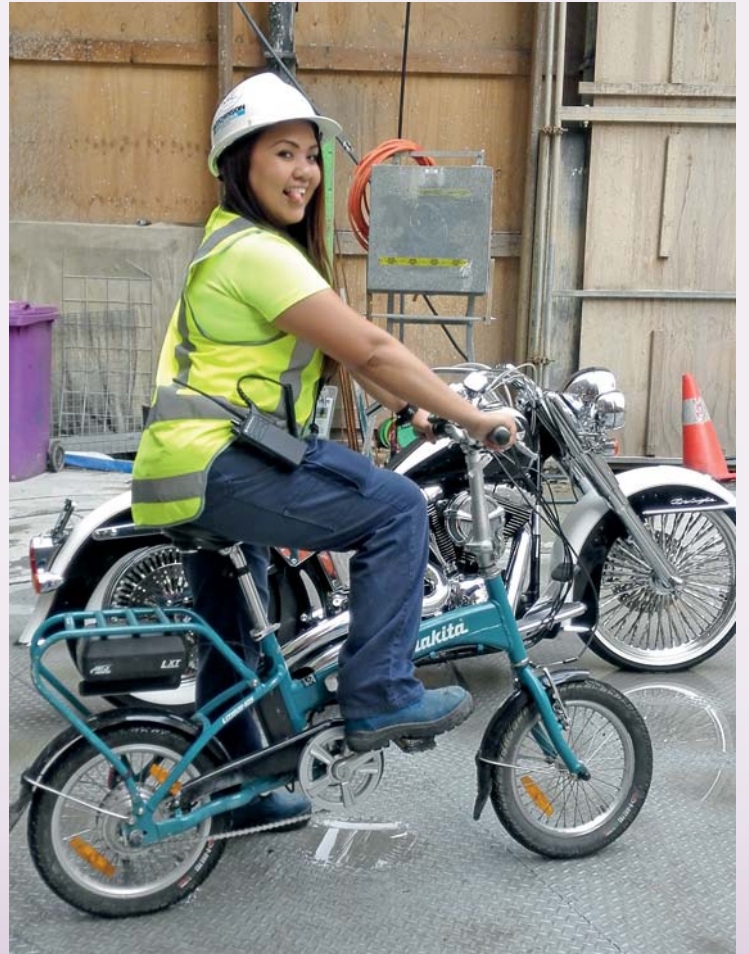
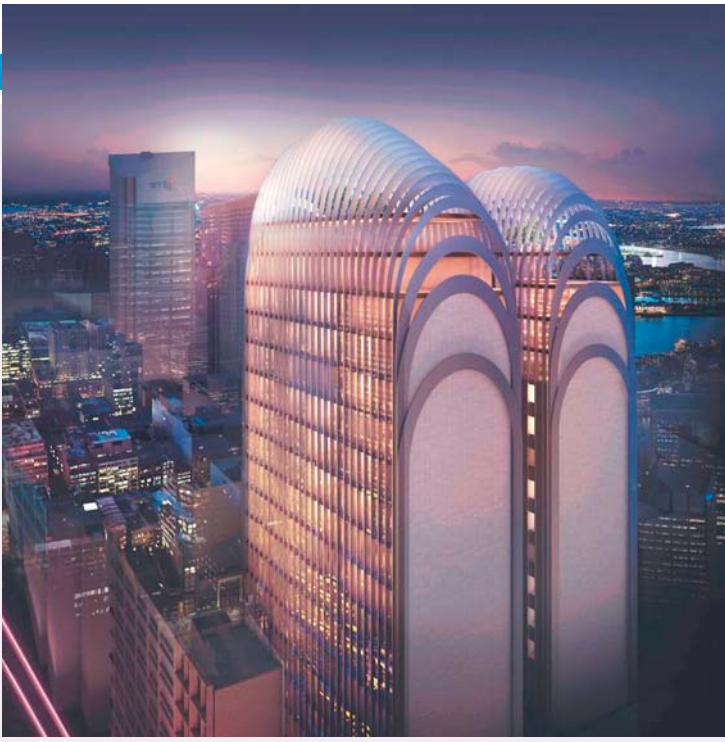
On the evidence of this I would have no hesitation in commending them to you and would be happy to amplify these comments if contact.

Yours sincerely,

**Eric Littler  
Principal, St Joseph's College  
Banora Point**



## Tooled up for traffic control



HUTCHIES' Gretchen Calica, traffic controller, on Sydney's new Arc project by Crown Group, makes easy work of doing her rounds on a bike made by the Makita tool company.

The \$115 million Arc project (artist's impressions pictured left) is a 26-storey tower with five levels of basement parking, incorporating a mix of serviced apartments, residential apartments and retail space located on Clarence Street in Sydney's CBD.



Jackie Clan shown in chef's apron and Hutchies' Undies with Mitchell Sparke (left) and Jamie Coe at the Aloha site barbecue.

## Jackie is all hands-on

HUTCHIES' client, Jackie Clan (aka Jackie Chan), took a hands-on approach when it came to the podium pour on his project located in Newmarket, Brisbane.

Jackie gave a hand with the concrete spread and then cooked up a barbecue lunch for the entire site team to celebrate the successful pour.

Aloha, a \$1.9 million unit development, is Jackie's first, and Hutchies' team leader, Ben Illes, said he is enjoying the experience.



Jackie Clan showed his skill in screeding the podium pour.

## 17 BANDALONG AVENUE, WEST PYMBLE

Job Value: \$1,338,000

**Job Description:** Project is a 36-week construction of a 36-place childcare centre.

Hutchies' Team Leader: ..... Brian Hood  
 Hutchies' Project Manager:..... Geoff Bauchop  
 Hutchies' Administrator:..... Selver Moshe  
 Hutchies' Site Manager:..... Patrick Boutkan  
 Hutchies' Supervisor:..... Patrick Boutkan  
 Hutchies' Cost Planner:..... Henry Liu  
 Architect Firm:..... Advanced Architecture and Construction

Struct & Civil Engineering Cons.: United Consulting Engineers

Electrical Consultant: ..... Viscona  
 Client:..... Allan and Lena D'Souza

## CALOUNDRA YMCA

Job Value: \$1,531,678

**Job Description:** The job is the construction of a new sports hall adjacent to existing facilities at YMCA Caloundra.

Hutchies' Team Leader: ..... Michael Michell  
 Hutchies' Project Manager:..... Steven Hodgins  
 Hutchies' Administrator:..... Emma Dunn  
 Hutchies' Site Manager:..... Mal Leeming  
 Hutchies' Cost Planner:..... Terry Lloyd  
 Architect Firm:..... Macksey Rush Architects  
 Struct & Civil Engineering Cons. Northrop  
 Electrical Consultant: ..... Ashburner Francis  
 Client:..... YMCA of Brisbane

## 310 ANN STREET, BRISBANE

Job Value: \$55M

**Job Description:** An iconic building on the Brisbane skyline for more than 30 years, the 310 Ann Street project will see a complete building refurbishment to be completed over 14 months.

Hutchies' Team Leader: ..... Russell Fryer  
 Hutchies' Project Manager:..... Jamie Washington  
 Hutchies' Administrator:..... Chris Jeffries/Alex Abel  
 Hutchies' Site Manager:..... Steve Williams  
 Hutchies' Supervisors: ..... Elliott Rees, Max Finlayson, Chris Gordon

Hutchies' Cost Planner:..... Simon McGilvray  
 Architect Firm:..... Trapp Architects  
 Structural Engineering Consult.: Robert Bird Group  
 Electrical Consultant: ..... Perigon Electrical (D&C Subbie)

Engineer/CA: ..... Luke Diamond  
 Superintendent: ..... Russell James Project Management  
 Client:..... Cornerstone Properties

## ST GEORGE DENTAL

Job Value: \$710,100

**Job Description:** The St George Dental project is a design and construction of the dental facility extension to the existing Goondri Medical Centre in St George.

## JOBS UPDATE

Hutchies' Team Leader: ..... Robert Weymouth  
 Hutchies' Construction Manager:Shaun Spry  
 Hutchies' Project Manager:..... Glynn Kidney  
 Hutchies' Site Manager:..... Greg Inwood  
 Hutchies' Cost Planner:..... Derek McVeigh  
 Architect Firm:..... Struxi Design  
 Client:..... University Of Queensland

## FAIRHOLME COLLEGE, NANCY SHAW DORMITORY

Job Value: \$1,083,000

**Job Description:** The Nancy Shaw Dormitory refurbishment is a two-storey refurbishment to cater for 52 boarding students. As well as the dormitory refurbishment Hutchies will be upgrading the fire facilities in the college to meet to the current standards of the BCA.

Hutchies' Team Leader: ..... Robert Weymouth  
 Hutchies' Construction Manager:Shaun Spry  
 Hutchies' Project Manager:..... Glynn Kidney  
 Hutchies' Site Manager:..... Mal Campbell  
 Hutchies' Cost Planner:..... Derek Mc Veigh  
 Architect Firm:..... Struxi Design  
 Structural Engineering Consult.: Kehoe Myer  
 Electrical Consultant: ..... Ashburner Francis  
 Client:..... Fairholme College

## PALM BEACH STATE SCHOOL

Job Value: \$838,643

**Job Description:** Job comprises refurbishment of two classroom blocks and prep building.

Hutchies' Team Leader: ..... Paul Hart  
 Hutchies' Project Manager:..... Neil Middleton  
 Hutchies' Administrator:..... Jon Zygadlo  
 Hutchies' Site Manager:..... Josh Pyle  
 Architect Firm:..... COBIE  
 Electrical Consultant: ..... BSI - Building Services Integration  
 Client:..... Queensland Government

## 300 ADELAIDE STREET, BRISBANE

Job Value: \$6,382,273

**Job Description:** Mechanical and electrical upgrade and refurbishment of 17 amenities and 11 lobbies in CBD office/retail high-rise.

Hutchies' Team Leader: ..... Levi Corby  
 Hutchies' Project Manager:..... Jason Marsden  
 Hutchies' Administrator:..... Kylie Nikolovski  
 Hutchies' Site Manager:..... Shaun Power  
 Architect Firm:..... Thomson Adsett  
 Electrical Consultant: ..... STP Consultants  
 Client:..... Star International Properties



The 20-level residential tower Capri - Newstead Central stage four.

## NEWSTEAD CENTRAL STAGE 4

Job Value: \$64,566,203

**Job Description:** Residential tower Capri is the fourth stage of the five-stage Newstead Central development on Ann Street comprising 187 units over 20 levels.

Hutchies' Team Leader: ..... Eddie Gangemi  
 Hutchies' Administrator:..... Mark Short  
 Hutchies' Site Manager:..... Wayne Sengelman  
 Hutchies' Cost Planner:..... Norm Swinburn  
 Architect Firm:..... Cox Rayner Architects  
 Structural Engineering Consult.: Fidelis Structural Engineering  
 Client:..... Metro Property Development

Hutchies' Team Leader: ..... John Berlese  
 Hutchies' Project Manager:..... Francois Pousson  
 Hutchies' Administrator:..... Nikolas Cox  
 Hutchies' Site Manager:..... John Smith  
 Hutchies' Supervisor:..... Chris Beattie  
 Hutchies' Cost Planner:..... Steven Priest  
 Architect Firm:..... Nettlenrtribe  
 Struct & Civil Engineer Consult: ADG Engineering  
 Quantity Surveyor:..... WT Partnership  
 Electrical Consultant: ..... Klenner Murphy Electrical  
 Mechanical Consultant:..... VAE Group  
 Hydraulic Consultant:..... Cooke & Dowsett  
 Fire Consultant:..... Firerite Services  
 Client:..... Sonic Healthcare

## COLES, SIPPY DOWNS

Job Value: \$13.1M

**Job Description:** Design and construction of a new Coles shopping centre and Liquorland at Sippy Downs.

Hutchies' Team Leader: ..... Russell Fryer  
 Hutchies' Project Manager:..... Luke Giles  
 Hutchies' Administrator:..... Craig Diedricks  
 Hutchies' Site Manager:..... Ross Durey  
 Hutchies' Cost Planner:..... Lawrence Versace  
 Architect Firm:..... POWE Architects  
 Structural Engineering Consult.: OPUS  
 Civil Engineering Consultant:..... CARDNO  
 Electrical Consultant: ..... DMA  
 Client:..... Coles Group Property Developments

## SODA APARTMENTS, SOUTH BRISBANE

Job Value: \$36M

**Job Description:** The 20-storey Soda, comprising 131 units, will include a rooftop BBQ area and a cantilevered pool with panoramic views to the city.

Hutchies' Team Leader: ..... Searle Balladone  
 Hutchies' Project Manager:..... Greg Crittall  
 Hutchies' Project Administrator: Sam Gibbs  
 Hutchies' Contract Administrator: Matt Williams  
 Hutchies' Site Manager:..... Ron Gerskowski  
 Hutchies' Foremen:..... Oliver Rayward, Ben Butler, Keith Robinson  
 Hutchies' Cost Planner:..... Stephen Wilson  
 Architect Firm:..... Ellivo/Group GSA  
 Structural Engineering Consult.: Odyssey Consulting  
 Civil Engineering Consultant:..... ADG Consultants  
 Quantity Surveyor:..... WT Partnership  
 Client:..... GDL Group  
 Project Financier:..... ANZ

## BEACH LIFE, CASUARINA

Job Value: \$7.1M

**Job Description:** Beach Life project comprises 29 free-standing townhouses in the centre of Casuarina.

Hutchies' Team Leader: ..... Paul Hart  
 Hutchies' Project Manager:..... Kruse Carter

## COLES FIT-OUT, TANNUM SANDS

Job Value: \$437,042

**Job Description:** This is the fit-out and refurbishment works to an existing Coles tenancy.

Hutchies' Team Leader: ..... Levi Corby/Paul Hart  
 Hutchies' Project Manager:..... Neil Middleton  
 Hutchies' Administrator:..... Jon Zygadlo  
 Hutchies' Site Manager:..... Josh Pyle  
 Client:..... Coles

## KIA SHOWROOM, ROBINA

Job Value: \$576,290

**Job Description:** Extensions to an existing KIA showroom will enable greater viewing space and improve current facilities.

Hutchies' Team Leader: ..... Levi Corby/Paul Hart  
 Hutchies' Project Manager:..... Neil Middleton  
 Hutchies' Administrator:..... Jon Zygadlo  
 Hutchies' Site Manager:..... Jason O'Conner  
 Architect Firm:..... WIM Architects  
 Client:..... Von Bibra

## CHINDERAH TAVERN

Job Value: \$1,478,410

**Job Description:** The project is a staged refurbishment of the Chinderah Tavern on the Tweed coast.

Hutchies' Team Leader: ..... Paul Hart  
 Hutchies' Project Manager:..... Kruse Carter  
 Hutchies' Administrator:..... Tim Todd  
 Hutchies' Site Manager:..... Richard Ainsworth  
 Architect Firm:..... Hamilton, Hayes, Henderson Architects  
 Structural Engineering Consult.: Short Engineers  
 Electrical Consultant: ..... McLean Consulting Engineers  
 Client:..... Date News Investments

## HEALTHCARE

Job Value: \$92,334,839

**Job Description:** Job is construction of new headquarters and pathology laboratories for Sullivan Nicolaides in Bowen Hills, Brisbane.



Stage two of the Icon project in Hobart's CBD involves the redevelopment of the now closed Murray Street Myer into premium retail outlets and extensions to the new Myer.



Artist's impression of the new museum and refurbished heritage-listed School of Arts building in Cairns.

Hutchies' Administrator: . . . . . Scott Rheinberger  
 Hutchies' Site Manager: . . . . . Mick Dodd  
 Hutchies' Supervisor: . . . . . Simon Tate  
 Architect Firm: . . . . . Scott Carpenter Architect  
 Structural Engineering Consult: Farr Engineers  
 Civil Engineering Consultant: . . . . . Newton Denny Chapelle  
 Electrical Consultant: . . . . . DMA  
 Client: . . . . . Consolidated Properties

## SCHOOL OF ARTS BUILDING, CAIRNS

**Job Value:** \$6,444,000

**Job Description:** Project consists of the refurbishment of a heritage-listed School of Arts building and construction of a new four-storey museum attached.

Hutchies' Team Leader: . . . . . Paul De Jong  
 Hutchies' Project Manager: . . . . . Peter Singleton  
 Hutchies' Administrator: . . . . . David Elms  
 Hutchies' Site Manager: . . . . . Glenn Skaraiev  
 Hutchies' Cost Planner: . . . . . Chris Hattingh  
 Architect Firm: . . . . . Total Project Group  
 Struct & Civil Engineer Consult: Arup  
 Electrical & Mech Consultant: . . . . . WSP  
 Screw Piling: . . . . . Russell Heale  
 Client: . . . . . Cairns Regional Council  
 Heritage Consultant: . . . . . Maxim

## DEPARTMENT OF DEFENCE, TASMANIA

**Job Value:** \$668,558

**Job Description:** The project involves three major components of works at the Derwent Barracks and Burnie Training Depot for the Department of Defence.

Hutchies' Team Leader: . . . . . Mick Connolly  
 Hutchies' Project Manager: . . . . . Nick Scott  
 Hutchies' Administrator: . . . . . Grant Davey  
 Hutchies' Site Managers: . . . . . Mike Harvey & Damian Heger  
 Hutchies' Cost Planner: . . . . . Courtney Winter  
 Struct & Civil Engineer Consult: Pitt & Sherry  
 Client: . . . . . Aurecon Group – Alister Clark

## COLES, JIMBOOMBA

**Job Value:** \$509,000

**Job Description:** Job involved refurbishment of the bakery and deli departments and other minor works within the 24-hour site.

Hutchies' Team Leader: . . . . . Paul Hart  
 Hutchies' Project Manager: . . . . . Murray Emmerson  
 Hutchies' Administrator: . . . . . Kyle Patience  
 Hutchies' Day Site Manager: . . . . . Matt Backman  
 Hutchies' Night Site Manager: . . . . . Luke Adkins

## ICON COMPLEX HOBART CENTRAL REDEVELOPMENT SPB

**Job Value:** \$24,670,130

**Job Description:** This six-storey, mixed-use development in the heart of the Hobart CBD is to be completed over three stages by August 2017.

Hutchies' Team Leader: . . . . . Mick Connolly  
 Hutchies' Project Manager: . . . . . Celine Dunne  
 Hutchies' Administrators: . . . . . Jack Sutton, Thomas Birchley  
 Hutchies' Site Manager: . . . . . Zak Zechowski  
 Architect Firm: . . . . . Architects Designhaus  
 Structural Engineering Consult: Gandy & Roberts  
 Quantity Surveyor: . . . . . Matrix Management Group  
 Electrical Consultant: . . . . . JMG Engineers and Planning  
 Client: . . . . . Kalis CBD Development

## DUNES SUBDIVISION, KINGSCLIFF

**Job Value:** \$5,362,675

**Job Description:** The Dunes development is a 50-lot residential subdivision on a 3.5 hectare site in Kingscliff.

Hutchies' Team Leader: . . . . . Paul Hart  
 Hutchies' Project Manager: . . . . . Grant LeBoutillier  
 Hutchies' Administrator: . . . . . Kyle Patience  
 Hutchies' Site Manager: . . . . . Rick Rowntree  
 Hutchies' Cost Planner: . . . . . Grant LeBoutillier  
 Structural Engineering Consult: Alliance Design Group  
 Civil Engineering Consultant: . . . . . Newton Denny Chapelle  
 Electrical Consultant: . . . . . MDA Consulting  
 Client: . . . . . Consolidated Properties

## LA TROBE UNIVERSITY UNION HALL

**Job Value:** \$2,066,799

**Job Description:** Project involves extensive refurbishment of Union Hall including electrical, mechanical, specialist theatrical lighting and removal of vinyl tiles containing asbestos.

Hutchies' Team Leader: . . . . . Dan Casey  
 Hutchies' Project Manager: . . . . . Dan Haycox  
 Hutchies' Administrator: . . . . . Contracts Administrator  
 Hutchies' Site Manager: . . . . . Michael Debono  
 Hutchies' Cost Planner: . . . . . Tom McKegg  
 Architect Firm: . . . . . DS Architects  
 Structural Engineering Consult: Webb Consult  
 Quantity Surveyor: . . . . . Wilde & Woollard  
 Services Consultant: . . . . . Lucid Consulting Australia  
 Client: . . . . . La Trobe University  
 Other: . . . . . Landscape Architect – Green & Dale Associates

Theatrical Lighting: . . . . . Relume Consulting  
 Audio Visual: . . . . . Parity Technology Consulting

## TOOWOOMBA BASE HOSPITAL

**Job Value:** \$2,100,000

**Job Description:** A new substation and switchroom are to be installed at Toowoomba Base Hospital.

Hutchies' Team Leader: . . . . . Robert Weymouth  
 Hutchies' Project Manager: . . . . . Craig Gooderham  
 Hutchies' Administrator: . . . . . Glynn Kidney  
 Hutchies' Site Manager: . . . . . Peter Teege  
 Hutchies' Cost Planner: . . . . . Derek McVeigh  
 Architect Firm: . . . . . Jacobs  
 Structural Engineering Consult: Jacobs  
 Civil Engineering Consultant: . . . . . Jacobs  
 Electrical Consultant: . . . . . Jacobs

## SKY ONE DISPLAY SUITE

**Job Value:** \$960,880

**Job Description:** Job is the construction of a high-end residential display suite in Box Hill.

Hutchies' Team Leader: . . . . . Dan Casey  
 Hutchies' Project Manager: . . . . . Marcus Kelly  
 Hutchies' Administrator: . . . . . Jo Nicholls  
 Hutchies' Site Manager: . . . . . Joe Kelly  
 Hutchies' Cost Planner: . . . . . Michael O'Hagan  
 Architect Firm: . . . . . DKO Architects  
 Structural Engineering Consult: Vert Engineering  
 Electrical Consultant: . . . . . Murchie Consulting  
 Client: . . . . . Golden Age Box Hill

## COLES, MELBOURNE CENTRAL

**Job Value:** \$303,376

**Job Description:** Work involved upgrading the Coles Melbourne Central deli and bakery area.

Hutchies' Team Leader: . . . . . Dan Casey  
 Hutchies' Project Manager: . . . . . James Angus  
 Hutchies' Administrator: . . . . . Jo Nicholls  
 Hutchies' Site Manager: . . . . . Tui Gilbert  
 Hutchies' Supervisor: . . . . . Christian O'Connor  
 Hutchies' Cost Planner: . . . . . Michael O'Hagan  
 Architect Firm: . . . . . Select Architects  
 Electrical Consultant: . . . . . Connor Pincus Group  
 Client: . . . . . Coles Supermarkets

## LUXE APARTMENTS, HOBART

**Job Value:** \$2,262,833

**Job Description:** Project involves the refurbishment of the heritage-listed former Flour Mill building in Hobart's CBD for fit-out to luxury apartments.

Hutchies' Team Leader: . . . . . Mick Connolly  
 Hutchies' Project Manager: . . . . . Nick Scott  
 Hutchies' Administrator: . . . . . Jay Kruger  
 Hutchies' Site Manager: . . . . . Paul Farrow  
 Hutchies' Cost Planner: . . . . . Courtney Winter  
 Architect Firm: . . . . . Stuart McKenzie  
 Hall Architecture & Construction

Structural Engineering Consult: Aldanmark  
 Quantity Surveyor: . . . . . Matrix  
 Client: . . . . . Brendon Bourke & Stephen Bourke  
 Superintendent: . . . . . Sugden & Gee

## EASTERN EPPING

**Job Value:** \$8,835,880

**Job Description:** Job involves demolition of two existing dwellings and construction of 30 residential apartments.

Hutchies' Team Leader: . . . . . Brian Hood  
 Hutchies' Project Manager: . . . . . Neil Saggus  
 Hutchies' Administrator: . . . . . Paul Lee  
 Hutchies' Site Manager: . . . . . Christopher Kerr  
 Hutchies' Cost Planner: . . . . . Andrew Chahoud  
 Architect Firm: . . . . . Brookes Architect  
 Structural Engineering Consult: Wehbe Consulting  
 Civil Engineering Consultant: . . . . . Coffey Consulting  
 Quantity Surveyor: . . . . . Heymann-Cohen  
 Electrical Consultant: . . . . . Northrop  
 Client: . . . . . Froat

## ZUCCOLI SHOPPING CENTRE

**Job Value:** \$9,858,213

**Job Description:** The Zuccoli Plaza is a green-field site to consist of three separate buildings including a combined IGA supermarket and liquor outlet and 13 speciality shops.

Hutchies' Team Leader: . . . . . Levi Corby  
 Hutchies' Project Manager: . . . . . Darrin Wilson  
 Hutchies' Administrator: . . . . . David Plunkett  
 Hutchies' Site Manager: . . . . . Cody Harris  
 Hutchies' Cost Planner: . . . . . Brendan Kavanagh  
 Architect Firm: . . . . . The Buchan Group  
 Structural Engineering Consult: Opus  
 Civil Engineering Consultant: . . . . . Cardno  
 Electrical Consultant: . . . . . MDA Consulting Engineers  
 Client: . . . . . Super Highway Express

## CORNERSTONE LIVING, COOPERS PLAINS

**Job Value:** \$2.7M

**Job Description:** Job is the latest stage of the precinct – adding 11 townhouses to this affordable housing project.

Hutchies' Team Leader: . . . . . Paul Hart  
 Hutchies' Project Manager: . . . . . Kruse Carter  
 Hutchies' Administrator: . . . . . Michael Brotherton  
 Hutchies' Cost Planner: . . . . . Luke Smith

Architect Firm: . . . . . IdeArchitecture  
 Struct & Civil Engineer Consult: Farr Engineers  
 Electrical Consultant: . . . . . ADP Engineers  
 Client: . . . . . Consolidated Properties

## RICHMOND PLACE, MELBOURNE

**Job Value:** \$18,100,250

**Job Description:** Project involves construction of a two-level basement with car stackers, four retail tenancies, four townhouses and 55 apartments on Bridge Road, Richmond, Melbourne.

Hutchies' Team Leader: . . . . . Ben McArthur  
 Hutchies' Project Manager: . . . . . Graham Spence  
 Hutchies' Administrator: . . . . . Sam Gibbons  
 Hutchies' Site Manager: . . . . . Daniel Wickery  
 Hutchies' Cost Planner: . . . . . Suzy Lee  
 Architect Firm: . . . . . BG Architecture  
 Struct & Civil Engineering Consult: 4D Consulting  
 Electrical Consultant: . . . . . ADP Consulting  
 Client: . . . . . Citiplan  
 Superintendent: . . . . . Neoscape

## ST. MARTIN APARTMENTS, BRIGHTON BEACH

**Job Value:** \$16,726,898

**Job Description:** This mixed-use development, comprising 51 apartments, 11 offices and a café, is located within walking distance of Brighton Beach, Melbourne.

Hutchies' Team Leader: . . . . . Ben McArthur  
 Hutchies' Project Manager: . . . . . David Bowles  
 Hutchies' Administrator: . . . . . Oussama Abou-Zeid  
 Hutchies' Site Manager: . . . . . Harry Kotsinadellis  
 Hutchies' Supervisor: . . . . . Alexander Smith  
 Hutchies' Cost Planner: . . . . . Stephen Edwards  
 Client PM: . . . . . Neoscape  
 PM Architect Firm: . . . . . BG Architecture  
 Structural Engineering Consult: 4D Workshop  
 Quantity Surveyor: . . . . . Napier & Blakeley  
 Services Consultant: . . . . . MAC Consultants  
 Client: . . . . . Citiplan

## CREST APARTMENTS, ASQUITH

**Job Value:** \$13,398,000

**Job Description:** This project is a 41-unit apartment block in Sydney with an expected completion date of February 2017.

Hutchies' Team Leader: . . . . . Brian Hood  
 Hutchies' Project Manager: . . . . . Neil Saggus  
 Hutchies' Administrator: . . . . . Katherine Mahon  
 Hutchies' Site Manager: . . . . . Richard Jackson  
 Hutchies' Cost Planner: . . . . . Andrew Chahoud  
 Architect Firm: . . . . . Quattro Architecture  
 Structural Engineering Consult: Acor Consultants  
 Civil Engineering Consultant: . . . . . Acor Consultants  
 Quantity Surveyor: . . . . . Heymann-Cohen  
 Electrical Consultant: . . . . . Acor Consultants/Northrop  
 Client: . . . . . M K G Properties  
 Other: . . . . . Faranak Alavi/Ben Peacock

## EMERALD CAFÉ

**Job Value:** \$1.34M

**Job Description:** Project involves demolition of an existing tenancy and construction of a high-end pastry café.

Hutchies' Team Leader: . . . . . Dan Casey  
 Hutchies' Project Manager: . . . . . James Angus  
 Hutchies' Administrator: . . . . . William Stirling  
 Hutchies' Site Manager: . . . . . Steve Van Bibber  
 Hutchies' Cost Planner: . . . . . Michael O'Hagan  
 Architect Firm: . . . . . Architects EAT  
 Service Consultants: . . . . . TJ Consult  
 Client: . . . . . Golden Age Group

## TARGET CASEY, VICTORIA

**Job Value:** \$805,000

**Job Description:** Job involves the fit-out of a new Target store in Narre Warren South.

Hutchies' Team Leader: . . . . . Dan Casey  
 Hutchies' Project Manager: . . . . . James Angus  
 Hutchies' Administrator: . . . . . William Stirling  
 Hutchies' Site Manager: . . . . . David Bores  
 Hutchies' Cost Planner: . . . . . James Angus  
 Architect Firm: . . . . . Target – Internal  
 Service Consultants: . . . . . TJ Consult  
 Client: . . . . . Target

**TRAVELLING  
UNDIES  
& BUDGIES**



LEFT: Stephen and Leanne Hutchinson enjoyed a visit to Italy with their Hutchies' Undies. Stephen is still pondering why the leaning Tower of Pisa leans, but its flagpole is vertical.



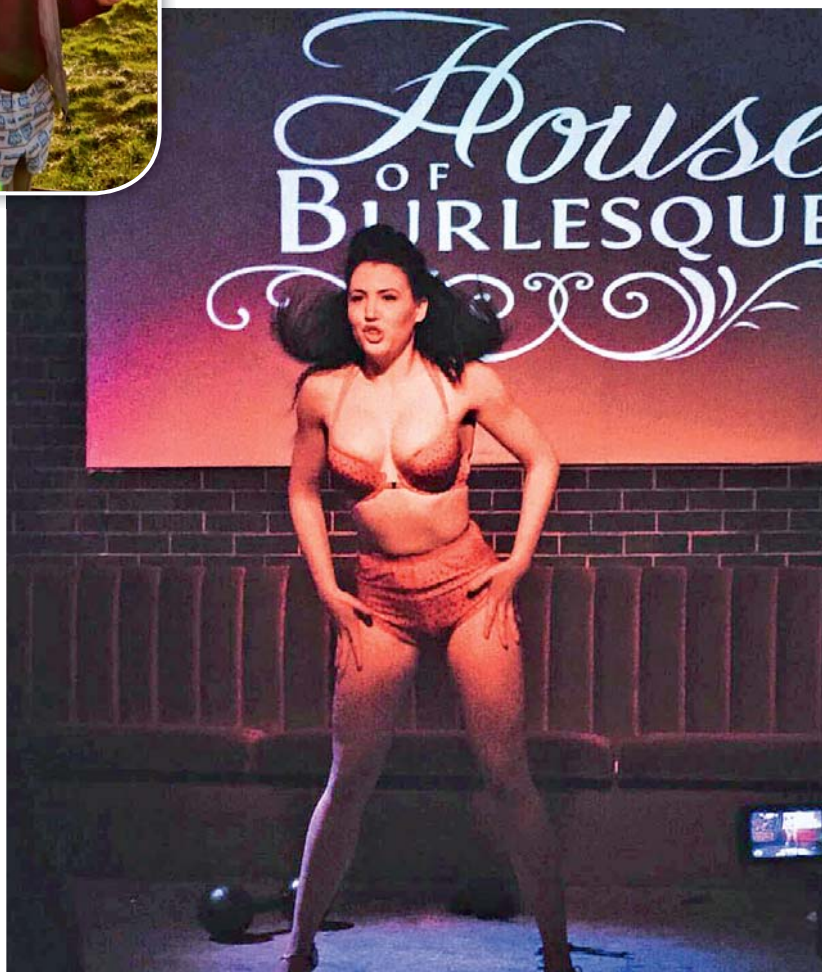
ABOVE: Carly Cottam and Paula Bella, of Consolidated Properties, put their heads together with Hutchies' Undies for a brainstorming session during a business planning retreat in Vietnam.



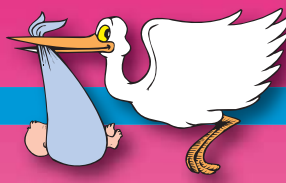
LEFT: Katherine Mahon rugged up in her Hutchies' Undies for a visit to Stonehenge during her winter Christmas holiday in London.



Ever wondered what police divers wear under their wetsuits? Hutchies' budgie smugglers, of course! Hutchies' Sunshine Coast team provided the gear ... and the evidence. Shown are members of the Police Dive Squad unit rinsing off after an operational dive.



Former Hutchies' receptionist, Hannah Franklin, who left to follow her dream for travel and adventure, has sent us this photo of her latest experience - burlesque dancing. Go girl!



*LEFT: Congratulations to Chris and Amanda Brown on the birth of their baby boy, Cooper Christopher Brown, who arrived in April.*

# HATCHED



*ABOVE: Michael Caughley and partner, Roxanne Arundell, welcomed son Patrick Michael Caughley in January as a new little brother to Ben, Jake, Max, Josh and Madeleine.*



*LEFT: Tiffany Jen Good was dressed for the occasion when she was introduced to the world by her family – Lindsay, Cassie and Harlen Good. Tiffany was born in February. Mum and dad describe her as a perfect daughter and sister.*



*RIGHT: Best wishes to Hutchies' duo, PK and Kruse Carter, who welcomed baby, Ted Frederick Carter, into the world on March 11.*

## Hello from the Easter bunnies



*The Easter Bunny and his helpers spread festive joy around Hutchies at Toowong during March. Disguised in bunny gear, Tabi Ward, Brooke Wilson and Sky Liston were on a mission to deliver eggs to all.*

## MATCHED



*JOSH Fergusson and Susanna Mihalik enjoyed a beach wedding in northern New South Wales with their daughter, Ivy, in December.*

*Josh wore a traditional Scottish uniform and the wedding party was accompanied by a wandering minstrel.*

# Recreation and financial gains from indoor bowls

CONSTRUCTION of a new indoor bowls facility by Hutchies at the Howrah Bowls Club will give members and visitors all year access to the sport – particularly during Tasmania's cold and wet winters.

It is also tipped to boost the local economy.

Stage one of the project, which started in January, will be a large 50 metre by 42 metre building

and internal fit-out.

Further works will include installation of a timber floor and bowls carpet, bringing the total cost to around \$1.5 million.

Howrah Bowls Club secretary, Michael Matthews, said the club was excited to see construction underway, marking the culmination of four years' hard work.

He said the centre would ensure members and the broader

community would have access to a world class lawn bowling facility all year round and the venue would attract state and national competitions, bringing income into the community for local business.

Clarence Mayor, Doug Chipman, said he was pleased to see another sport and recreation facility being constructed in the

city, which would not have been possible without financial help from the Howrah Bowls Club and the Sport and Recreation Division of the Department of Premier and Cabinet (PAC).

Clarence City Council provided more than \$1 million, Howrah Bowls Club \$510,000 and PAC \$80,000. The facility is expected to be completed in June.

## Community in overdrive on Bee Super Highway



Some of the creative team driving the Bee Super Highway are (from left) Debbie Marshall, Lisa Evett and Annette Van Kampen, Innovation Centre Sunshine Coast; Adrian McCallum, USC Engineering; Retha Scheepers, USC School of Business; Mark Paddenburg, CEO Innovation Centre; and Dean Alle, entrepreneur in residence, Innovation Centre.

HUTCHIES has joined in a plan by Hive Haven on the Sunshine Coast to establish a Bee Super Highway – a network of 1,000 hives across south east Queensland.

When Hutchies' team heard about the Bee Super Highway it donated 10 hive stands to help the fledgling project and boxes get off the ground.

Founders of Hive Haven, Ann and Jeff Ross, said the initiative had a long list of businesses and individuals wanting to purchase their own hives and display stands.

They said the Bee Super Highway was a popular project that would not have got across the line without the help of Hutchies, lecturers from the University of

the Sunshine Coast, the QUT School of Design, and the team at the Innovation Centre Sunshine Coast.

Hive Haven is working hard to develop a stingless native bee box that will maintain a stable temperature to prevent bees dying from heat stress.

The hives are built using HPDE – a material sourced from recycled milk bottles – helping to keep the 'reduce, reuse, recycle' mantra alive.

The boxes are being trialled at various locations on the Super Highway.

Ann and Jeff refer to their inventions as "sustainable bee-kind solutions" in keeping with an overall green development mentality.



Howrah Bowls Club sod turning ceremony included Hutchies' site manager, Wade Allan, and contract administrator, Victoria Logan.

(Photo: Eastern Shore Sun)

## Rugged trek to help youth



Winners of the 15 km Corporate Challenge (from left) Ben Adams, Dale Borghardt, Rod Morgan and Corey Guse.

FOUR Hutchies' Toowoomba teams competed recently in the annual Kokoda Youth Challenge, with some doing 15 km and others 30 km, through the rugged terrain of the Toowoomba Range.

Hutchies is proud to be the main sponsor of this worthy event which drew 1,200 competitors and raised more than \$150,000, with all the proceeds going towards assisting disadvantaged youth within the local community.

# Crowded house in Laneway



Scott at the Melbourne Laneway Festival with (L-R) Amber Studdert, Pat Simmonds, Robbie Edwards and Ana Wansink.

SCOTT Hutchinson joined 40 of Hutchies' Melbourne team members for a day out at the popular St Jerome's Laneway Festival in February.

Laneway festivals support fresh new talent and feature cutting edge music.

One of Hutchies' boys scaled a tree for a better view, but was soon brought down to earth by festival security who gave him a severe talking to.

A great day for team building.

# Triple birthdays celebration



JOHN Berlese's team recently celebrated triple birthdays for John (pictured), Rossario Adamo and Scott Dwan.

Beautiful cakes displayed the softer side of JB's team and he took delight in taking the knife to the peace offerings.



# Busy bees at kindy

HUTCHIES' Tim Ferguson was head ute driver and daughter, Tessa, was site manager when they volunteered for a recent working bee at St John's Anglican Kindergarten in Toorak. The team of volunteers created a new sensory garden for the children.

## Toowoomba softball team slogs it out for finals play off series

HUTCHIES' Hunnies managed to finish as the slow pitch softball team has been at it again in the annual Play for a Cure fundraising softball day.

It was a great day of sport and more than \$2,000 was raised for the Play for a Cure charity.

Hutchies' Hunnies went one better than the third place from last year and

managed to finish as the runners-up, losing a close game in the final.

But the game plan is working and they intend to go one better again next year!

Their prize money was donated to a 14-year-old Sunshine Coast boy – a great gesture by Hutchies' team.



Hutchies' Hunnies (from left, rear) Damien Watson, Chris McRae (former Australian representative), Tash Torpey, Tanya McRae, Keith Wright, Amie Thomas, Quin Hoareau and (front) Juliana Hoareau, Norelle Thomas, Angie Sunley, Scott Sunley (former Australian representative and member of Softball Hall of Fame), Emma Thomas and Rod Thomas.

## Rob's insane solo endurance ride



Rob Macpherson (centre) celebrates his feat with Sydney team leader, Brian Hood, (left) and Sean Nyssen.

ROB Macpherson, Hutchies' services manager in Sydney, recently proved his dedication to getting the job done, no matter what it takes.

In March, Rob, a passionate long distance motorcycle rider and equally passionate fundraiser, achieved a lifelong goal to successfully complete one of the most difficult endurance rides in Australia.

He rode 10,200 kms from Byron Bay, New South Wales, to Denham, Western Australia, and back in six days (under 144 hours).

The journey is known as the Trans Australia Insanity, a feat which only three

other people before him have successfully accomplished.

Rob embarked on this epic journey to raise money to build a maternity ward in northern Uganda for the Love Mercy Foundation, set up by Australian Olympian and family friend, Eloise Wellings.

The foundation aims to empower rural communities to overcome poverty after decades of civil war and Rob raised more than \$38,000 for the cause.

He is back to sleeping more than two hours per night, but is dreaming of his next long distance bike ride.



## Loose Cannons let fly

THE Hutchies' Loose Cannons recently competed in the Casuarina Cup touch football competition in northern New South Wales.

With 70 teams competing across a range of categories, the team fought hard over the two-day carnival to eventually go down in their semi-final.

Hutchies was represented by Indigenous program co-ordinator, Mark Kucks, (second from left) who said his team was proud to fly the Hutchies' colours over the weekend.

Like us on Facebook:

<http://www.facebook.com/hutchies1912>

Follow us on Twitter:

<http://twitter.com/hutchies1912>

Picture us on Instagram: hutchies1912

See our company page on LinkedIn:

[http://www.linkedin.com/company/91031?trk=pro\\_other\\_cmpy](http://www.linkedin.com/company/91031?trk=pro_other_cmpy)



### Great prizes to be won!

## Scratch-its

If your Hutchies' Scratchie matches the lucky numbers listed you are a winner! To claim your prize telephone Hutchies on (07) 3335 5000.

Prizes compliments of Hutchinson Builders.

No.	Prize
20203	Hutchies T-Shirt
20359	Hutchies Undies
20413	Tape measure
20533	Hand Sander
20869	Hutchies Cap
20920	Jack's Tequila
21109	Paint brush set
21489	Hutchies T-Shirt
21536	Screw Driver Set
21678	Drill Bit Set

No.	Prize
21776	Hutchies Undies
21814	Chalk Line
21999	Hutchies Honey
22106	Paint brush set
22365	Hutchies T-Shirt
23437	Hutchies Honey
23522	Hutchies G-string
23696	Screw Driver Set
23719	Hutchies Undies
23869	Jack's Tequila

No.	Prize
23941	Tape measure
24001	Hutchies Cap
24187	Hutchies Honey
24266	Hutchies T-Shirt
24398	Hutchies Undies
24444	Hutchies T-Shirt
24597	Hutchies Undies
24654	Tape measure
24711	Hutchies Undies
24836	Hutchies Cap

No.	Prize
24977	Hutchies Honey
25022	Paint brush set
25197	Hutchies T-Shirt
25252	Screw Driver Set
25392	Drill Bit Set
25434	Hutchies Undies
25555	Chalk Line
25687	Jack's Tequila
25713	Paint brush set
25894	Hutchies T-Shirt

No.	Prize
25949	Hutchies G-string
26000	Screw Driver Set
26199	Hutchies Undies
26282	Hutchies Honey
26374	Tape measure
26826	Hutchies Cap
26944	Hutchies Honey
27525	Hutchies T-Shirt
27703	Hutchies Undies
27919	Chalk Line